



# COVID-19-CHECK-1

**A rapid immunochromatographic screening test  
for the detection of the anti-SARS-CoV-2 IgG/IgM  
antibodies in serum, plasma or whole blood**

Distributed by:

**Quadraturetech**



Product Code:

**200081-4-2-3L**

Size:

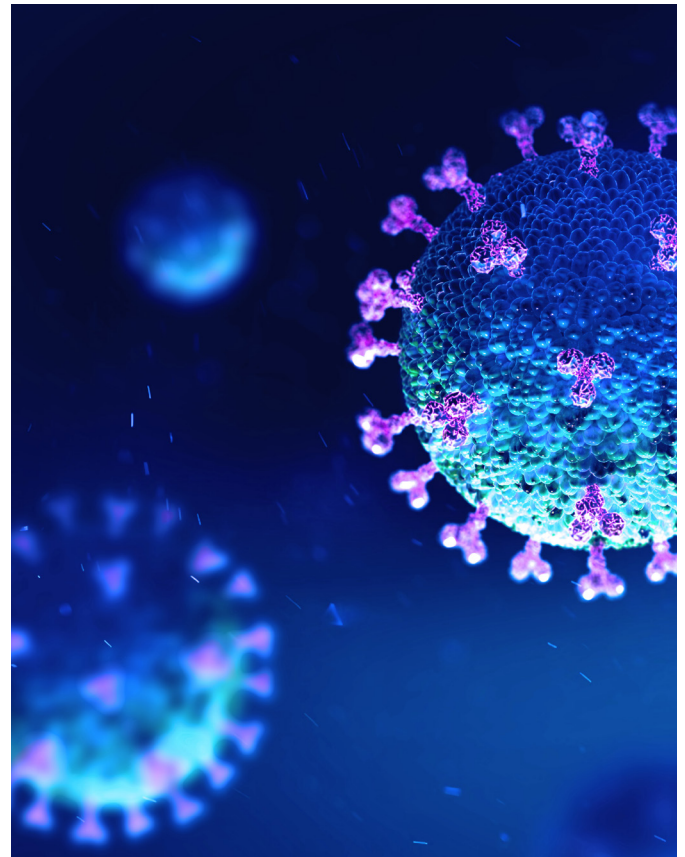
**20 Tests**

# COVID-19-CHECK-1

Product Code: 200081-4-2-3L

COVID-19-CHECK-1 is a quick, reliable and cost effective way of detecting COVID-19 antibodies.

It is ideal for employers wanting to assess their workforce's COVID-19 serological status.



## TRUSTED

- Quadratech have been a supplier to the NHS for over 25 years
- EU Manufactured and EU evaluated (France)

## QUICK

- Results in just 10 to 15 minutes

## COST EFFECTIVE

- Competitively priced

## ACCURATE & RELIABLE

- Highly accurate with excellent IgM/ IgG sensitivity and specificity
- CE marked for professional use





## HOW DOES IT WORK?

The test detects the presence of specific antibodies related to COVID-19 in a sample of whole blood, serum or plasma. The test will show a positive result if it is able to detect the presence of either of 2 different antibodies: IgM and IgG.

If an individual is exposed to COVID-19, IgM is the first antibody to be produced in order to immediately help the human body to fight an infection.

The IgG antibody is produced after the initial phase of the infection to help protect against a repeat infection.

*For medical healthcare professional use only - the physician should evaluate the data obtained using this kit in the light of the other clinical information available.*



**For more information  
please contact:**

**Quadraturetech Diagnostics Ltd  
Station House, Cooksbridge  
Lewes, East Sussex  
BN8 4SW**

**T: 033 3321 2371  
F: 033 3321 2372  
E: [info@quadraturetech.co.uk](mailto:info@quadraturetech.co.uk)**

**[www.quadraturetech.co.uk](http://www.quadraturetech.co.uk)**

**Provider of Quality Medical Diagnostic & Research Products**

Distributed by:

**Quadraturetech**



Product Code:

**200081-4-2-3L**

Size:

**20 Tests**